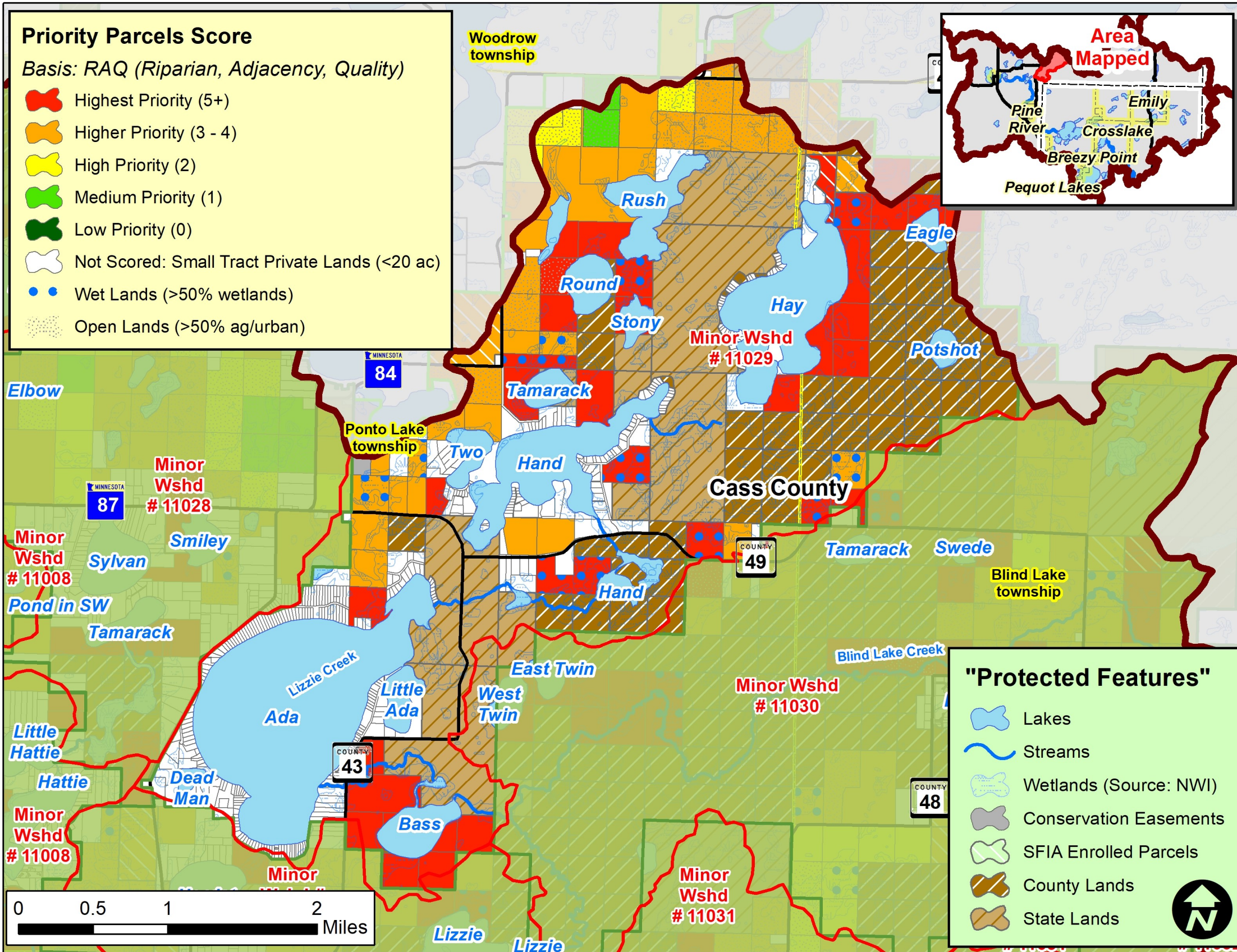
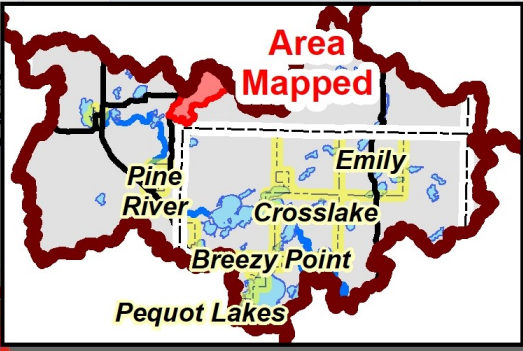


# RAQ Scoring for Parcels in the Lake Ada Minor Watershed (Minor #11029)



**Priority Parcels Score**  
 Basis: RAQ (Riparian, Adjacency, Quality)

- Highest Priority (5+)
- Higher Priority (3 - 4)
- High Priority (2)
- Medium Priority (1)
- Low Priority (0)
- Not Scored: Small Tract Private Lands (<20 ac)
- Wet Lands (>50% wetlands)
- Open Lands (>50% ag/urban)



Scoring Criteria:		
<b>Riparian</b>	3	Riparian
	2	Non-riparian: Shoreland (1 parcel back)
	1	2 parcels back
<b>Adjacency</b>	3	2 sides touching public land
	2	1 side touching public land
	1	One parcel removed from public land or touching parcel with SFIA or Easement
<b>Quality*</b>	3	1 point for each feature that the parcel touches: such as High or Outstanding Biodiversity (upl. or aqu.), Wild Rice L,
	2	
	1	

\* Quality is locally determined and can include other features, including groundwater resources. For this project, quality also included:

- Outstanding Resource Value Resources (MPCA)
- Old Growth Forests (DNR)
- Lakes with Exceptional IBI Scores (DNR)
- Drinking Water Supply Management Areas (MDH)
- High or Outstanding Wildlife Action Network Score (DNR)

**"Protected Features"**

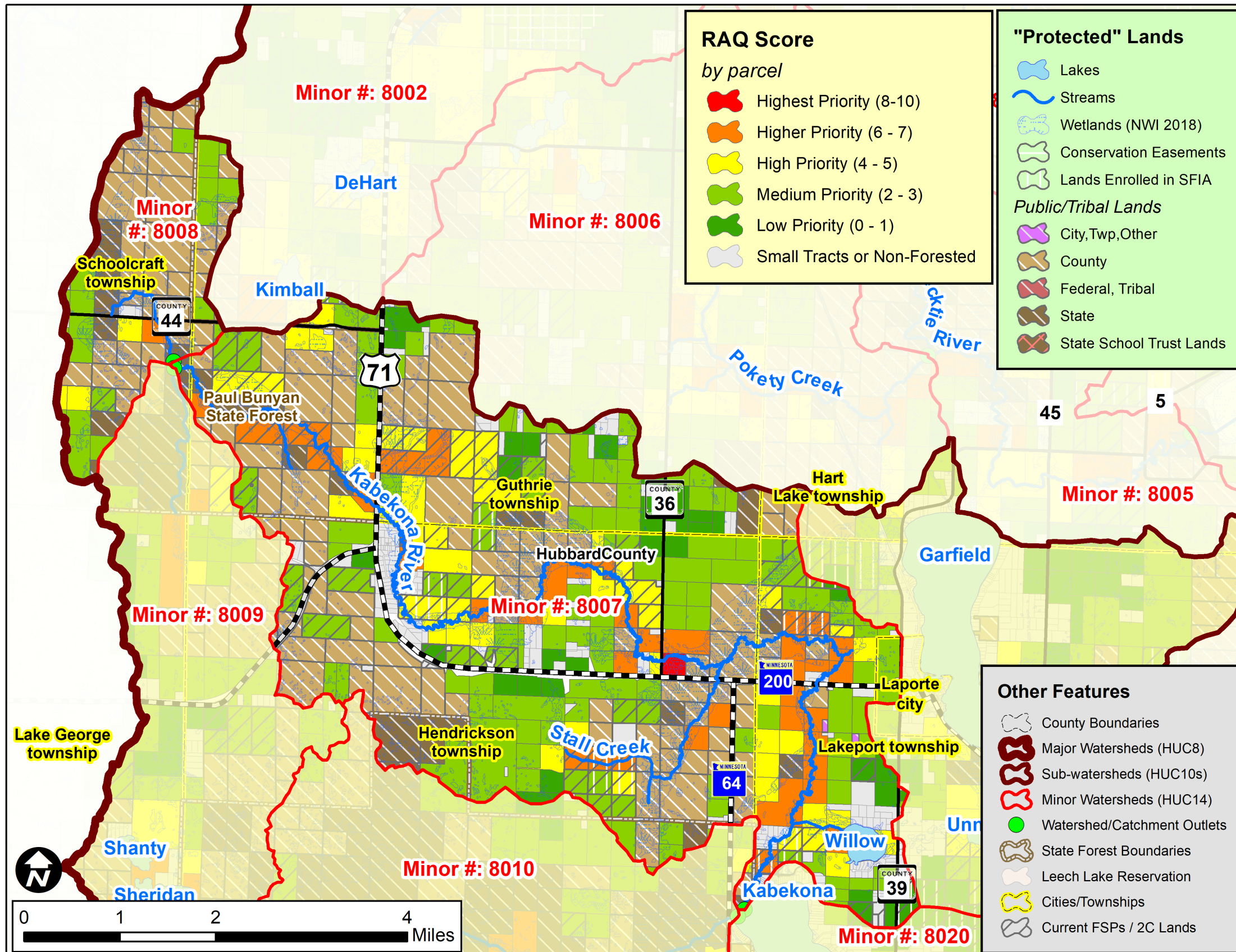
- Lakes
- Streams
- Wetlands (Source: NWI)
- Conservation Easements
- SFIA Enrolled Parcels
- County Lands
- State Lands

## Implementation Toolbox

Plan It!	Improve It!	Manage It!	Buy It!
General Advice & Assistance • Factsheets • Poster / Mailers • Workshops • Website / Social Media	Specific Advice & Assistance • Site Visits • Plans: - Landscape Stewardship - Forest Stewardship Projects	Grants & Cost-share Projects • Tree Planting • Bud Capping • Timber Stand Improvement (Thinning)	Fee Title Conservation Easements Acquisition • Donated • Purchased • Federal • State • County



# RAQ Scoring for Parcels in Minor Watersheds #8007, 8008



Scoring Criteria:		
<b>Riparian</b>	3	Riparian
	2	Non-riparian: Shoreland (1 parcel back)
	1	2 parcels back
<b>Adjacency</b>	3	2 sides touching public land
	2	1 side touching public land
	1	One parcel removed from public land or touching parcel with SFIA or Easement
<b>Quality*</b>	3	1 point for each feature that the parcel touches: High or Outstanding Biodiversity (upl. or aqu.), Wild Rice L, Cisco L, Trout L/Streams, et. al.
	2	
	1	

\* Quality is locally determined and for this project included other features, including groundwater resources. For this project, quality also included:

- Outstanding Resource Value Resources (MPCA)
- Old Growth Forests (DNR)
- Lakes with Exceptional IBI Scores (DNR)
- Drinking Water Supply Management Areas (MDH)
- Source Water Assessment Areas (MDH)
- Medium High or High Wildlife Action Network Score (DNR)
- Native Muskie Lakes
- Priority Shallow /Waterfowl Lakes
- Audubon Important Bird Areas (IBAs)
- Rare Species (DNR)...see disclaimer below

Rare species data included in the RAQ scoring: Copyright 2018, State of Minnesota, Department of Natural Resources. Rare species data included here were provided by the Division of Ecological and Water Resources Division, Minnesota Department of Natural Resources (DNR), and were current as of May 2018. These data are not based on an exhaustive inventory of the state. The lack of data for any geographic area shall not be construed to mean that no significant features are present.